

Parallel Coordinates—REVISITED

Norm Matloff
University of California at Davis
(new collaborator: Yingkang Xie)

Bay Area R Users Group
November 12, 2013

Outline

Outline

- What IS parallel coordinates, anyway?

Outline

- What IS parallel coordinates, anyway?
- SEEMS to be a great tool.

Outline

- What IS parallel coordinates, anyway?
- SEEMS to be a great tool. But has MAJOR problems.

Outline

- What IS parallel coordinates, anyway?
- SEEMS to be a great tool. But has MAJOR problems.
- I will present a novel way to make parallel coordinates usable.

What IS Parallel Coordinates?

What IS Parallel Coordinates?

- Attempt to view multidimensional data on 2-dimensionah screen.

What IS Parallel Coordinates?

- Attempt to view multidimensional data on 2-dimensionah screen.
- Simple idea:

What IS Parallel Coordinates?

- Attempt to view multidimensional data on 2-dimensional screen.
- Simple idea:
 - Draw a vertical line for each variable (“parallel coords.”).

What IS Parallel Coordinates?

- Attempt to view multidimensional data on 2-dimensional screen.
- Simple idea:
 - Draw a vertical line for each variable (“parallel coords.”).
 - For each data point, mark a dot on each vertical line, at the value of that variable for that data point.

What IS Parallel Coordinates?

- Attempt to view multidimensional data on 2-dimensional screen.
- Simple idea:
 - Draw a vertical line for each variable (“parallel coords.”).
 - For each data point, mark a dot on each vertical line, at the value of that variable for that data point.
 - For each data point, “connect the dots.”

What IS Parallel Coordinates?

- Attempt to view multidimensional data on 2-dimensional screen.
- Simple idea:
 - Draw a vertical line for each variable (“parallel coords.”).
 - For each data point, mark a dot on each vertical line, at the value of that variable for that data point.
 - For each data point, “connect the dots.”
 - Resulting graph: a jagged line for each of your original data point.

What IS Parallel Coordinates?

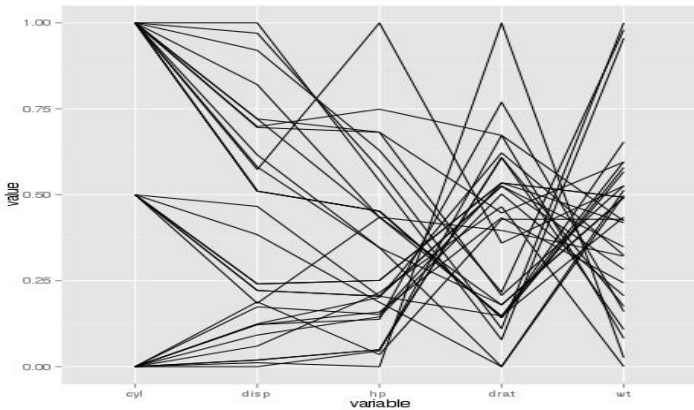
- Attempt to view multidimensional data on 2-dimensional screen.
- Simple idea:
 - Draw a vertical line for each variable (“parallel coords.”).
 - For each data point, mark a dot on each vertical line, at the value of that variable for that data point.
 - For each data point, “connect the dots.”
 - Resulting graph: a jagged line for each of your original data point.
 - Can then try to find relations between variables by looking at line patterns.

What IS Parallel Coordinates?

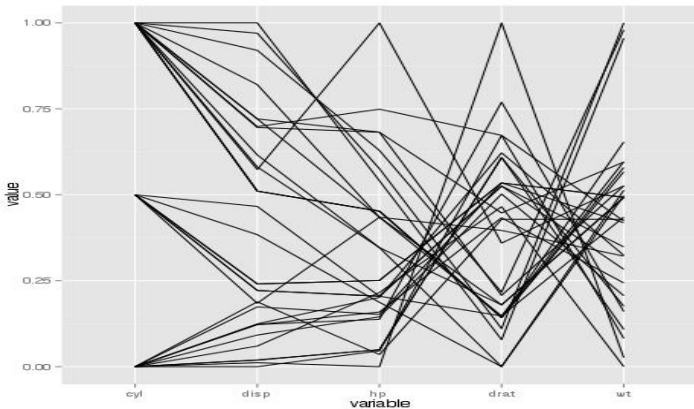
- Attempt to view multidimensional data on 2-dimensional screen.
- Simple idea:
 - Draw a vertical line for each variable (“parallel coords.”).
 - For each data point, mark a dot on each vertical line, at the value of that variable for that data point.
 - For each data point, “connect the dots.”
 - Resulting graph: a jagged line for each of your original data point.
 - Can then try to find relations between variables by looking at line patterns.
 - The operative word is “try.”

Example: R cars data

Example: R cars data

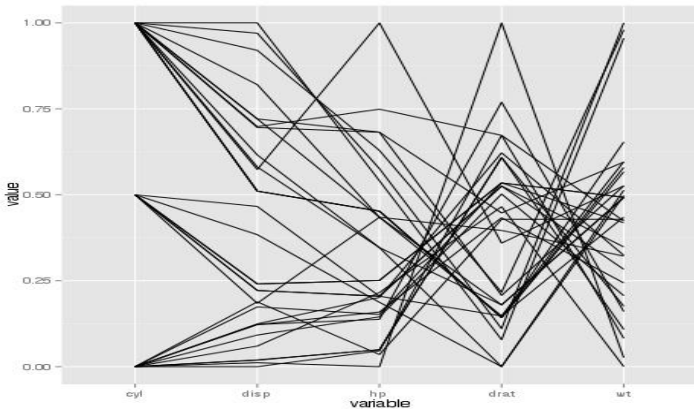


Example: R cars data



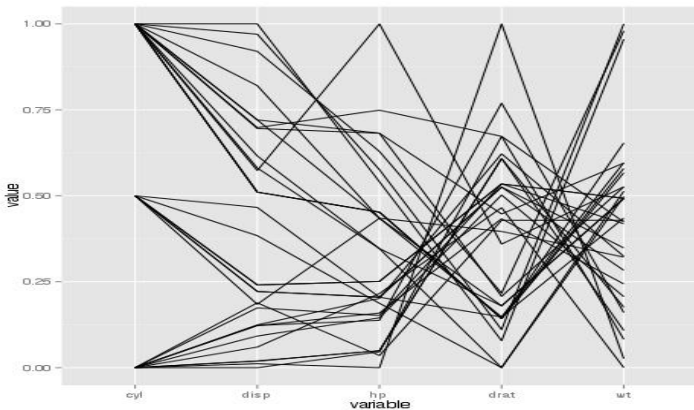
- Each jagged line is one car.

Example: R cars data



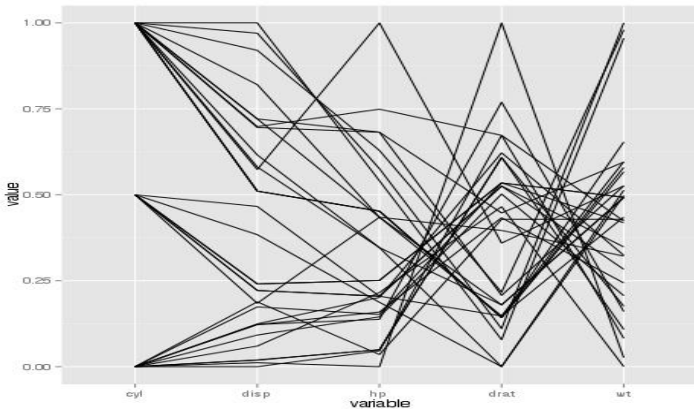
- Each jagged line is one car.
- Vertical axes are the variables, Cyl, Disp, Hp, etc.

Example: R cars data



- Each jagged line is one car.
- Vertical axes are the variables, Cyl, Disp, Hp, etc.
- ALREADY hard to interpret!

Example: R cars data



- Each jagged line is one car.
- Vertical axes are the variables, Cyl, Disp, Hp, etc.
- ALREADY hard to interpret!
- Note: Variables are typically centered and scaled.

Problems

Problems

Hard to interpret, except in “small n , small p ” data.

Problems

Hard to interpret, except in “small n , small p ” data.
(p = number of variables)

Problems

Hard to interpret, except in “small n , small p ” data.
(p = number of variables)

Problem 1: Hard to see relation between “far apart” variables

Problems

Hard to interpret, except in “small n , small p ” data.
(p = number of variables)

Problem 1: Hard to see relation between “far apart” variables

Typical solution:

Problems

Hard to interpret, except in “small n , small p ” data.
(p = number of variables)

Problem 1: Hard to see relation between “far apart” variables

Typical solution:

Allow user to interactively do various permutations of the axes.

Problems

Hard to interpret, except in “small n , small p ” data.
(p = number of variables)

Problem 1: Hard to see relation between “far apart” variables

Typical solution:

Allow user to interactively do various permutations of the axes.

Problem 2: Screen clutter!!!!

Problems

Hard to interpret, except in “small n , small p ” data.
(p = number of variables)

Problem 1: Hard to see relation between “far apart” variables

Typical solution:

Allow user to interactively do various permutations of the axes.

Problem 2: Screen clutter!!!!

Typical solutions:

Problems

Hard to interpret, except in “small n , small p ” data.
(p = number of variables)

Problem 1: Hard to see relation between “far apart” variables

Typical solution:

Allow user to interactively do various permutations of the axes.

Problem 2: Screen clutter!!!!

Typical solutions:

1. α blending (making pixels less dark).

Problems

Hard to interpret, except in “small n , small p ” data.
(p = number of variables)

Problem 1: Hard to see relation between “far apart” variables

Typical solution:

Allow user to interactively do various permutations of the axes.

Problem 2: Screen clutter!!!!

Typical solutions:

- 1. α blending (making pixels less dark).*
- 2. Plotting line density instead of lines (equiv. to α).*

Problems

Hard to interpret, except in “small n , small p ” data.
(p = number of variables)

Problem 1: Hard to see relation between “far apart” variables

Typical solution:

Allow user to interactively do various permutations of the axes.

Problem 2: Screen clutter!!!!

Typical solutions:

- 1. α blending (making pixels less dark).*
- 2. Plotting line density instead of lines (equiv. to α).*
- 3. Look at random subset of the data.*

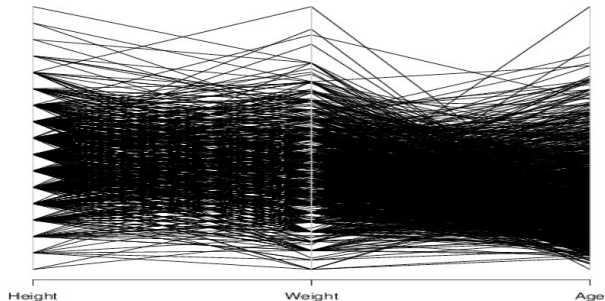
Example of Clutter

Example of Clutter

Example: Baseball Player data—height, weight, age (courtesy of UCLA Stat. Dept.)

Example of Clutter

Example: Baseball Player data—height, weight, age (courtesy of UCLA Stat. Dept.)



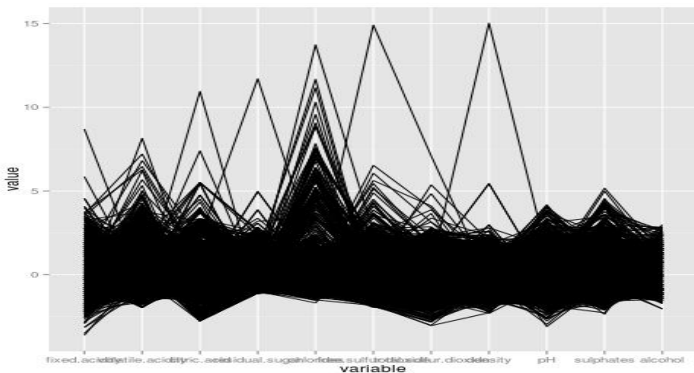
Another Example of Clutter

Another Example of Clutter

Example: Wine Quality data—various chemical measures (UCI Repository)

Another Example of Clutter

Example: Wine Quality data—various chemical measures (UCI Repository)



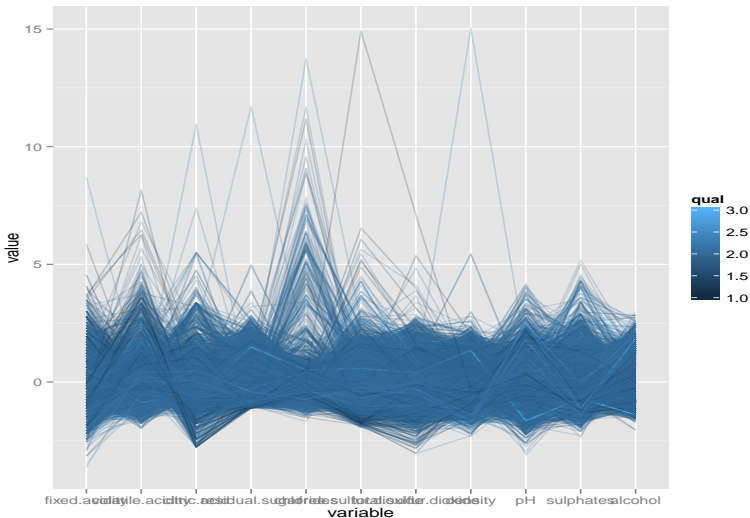
Alpha Blending May Not Help

Alpha Blending May Not Help

α blending may not help:

Alpha Blending May Not Help

α blending may not help:



Parallel
Coordinates—
REVISITED

Norm Matloff
University of
California at
Davis
(new
collaborator:
Yingkang Xie)

Yikes!

Yikes!

Comments:

- Yikes!

Yikes!

Comments:

- Yikes!
- “Don’t let the picture intimidate you!”—A. Inselberg, one of the pioneers of parallel coordinates, speaking in general of cluttered p.c. plots

Yikes!

Comments:

- Yikes!
- “Don’t let the picture intimidate you!”—A. Inselberg, one of the pioneers of parallel coordinates, speaking in general of cluttered p.c. plots
- But it IS intimidating!

Comments:

- Yikes!
- “Don’t let the picture intimidate you!”—A. Inselberg, one of the pioneers of parallel coordinates, speaking in general of cluttered p.c. plots
- But it IS intimidating!
- Can TRY to exploit geometric properties:

Comments:

- Yikes!
- “Don’t let the picture intimidate you!”—A. Inselberg, one of the pioneers of parallel coordinates, speaking in general of cluttered p.c. plots
- But it IS intimidating!
- Can TRY to exploit geometric properties:
 - X shape \Rightarrow negative ρ

Comments:

- Yikes!
- “Don’t let the picture intimidate you!”—A. Inselberg, one of the pioneers of parallel coordinates, speaking in general of cluttered p.c. plots
- But it IS intimidating!
- Can TRY to exploit geometric properties:
 - X shape \Rightarrow negative ρ
 - $<$ shape \Rightarrow positive ρ

Comments:

- Yikes!
- “Don’t let the picture intimidate you!” —A. Inselberg, one of the pioneers of parallel coordinates, speaking in general of cluttered p.c. plots
- But it IS intimidating!
- Can TRY to exploit geometric properties:
 - X shape \Rightarrow negative ρ
 - $<$ shape \Rightarrow positive ρ
 - Nice theory, form projective geometry, etc.

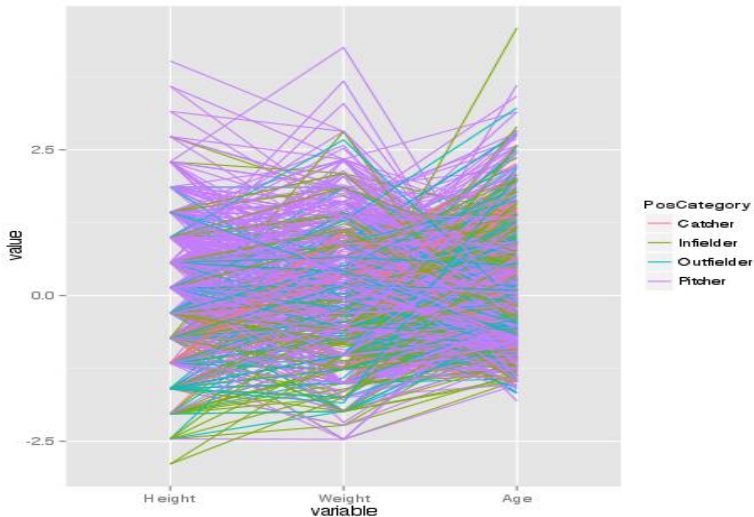
Example of Clutter, cont'd.

Example of Clutter, cont'd.

Grouping by player position doesn't help much:

Example of Clutter, cont'd.

Grouping by player position doesn't help much:



Parallel
Coordinates—
REVISITED

Norm Matloff
University of
California at
Davis
(new
collaborator:
Yingkang Xie)

My Way

My Way

My approach:

My Way

My approach: **Plot only a few “typical” lines.**

My Way

My approach: **Plot only a few “typical” lines.**

- “Typical” means highest estimated multivariate density.

My Way

My approach: **Plot only a few “typical” lines.**

- “Typical” means highest estimated multivariate density.
- No clutter.

My Way

My approach: **Plot only a few “typical” lines.**

- “Typical” means highest estimated multivariate density.
- No clutter.
- Far-apart variables problem ameliorated.

My approach: **Plot only a few “typical” lines.**

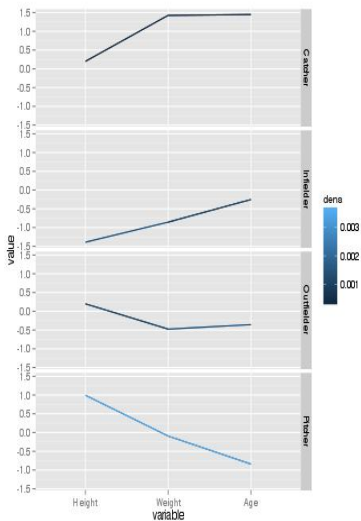
- “Typical” means highest estimated multivariate density.
- No clutter.
- Far-apart variables problem ameliorated.
- (Not related to *parallel coordinate density plots*.)

My approach: **Plot only a few “typical” lines.**

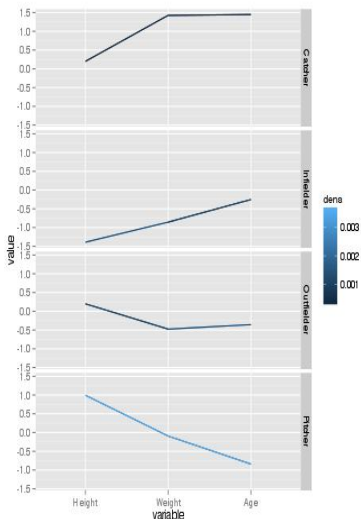
- “Typical” means highest estimated multivariate density.
- No clutter.
- Far-apart variables problem ameliorated.
- (Not related to *parallel coordinate density plots*.)

Baseball Data, My Way

Baseball Data, My Way

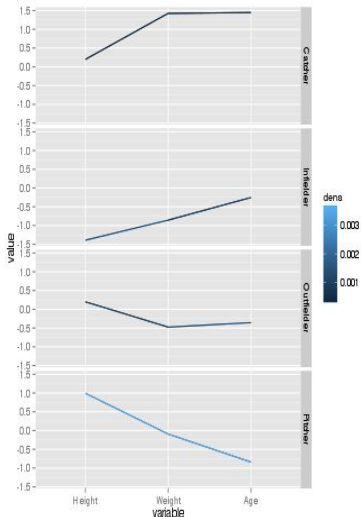


Baseball Data, My Way



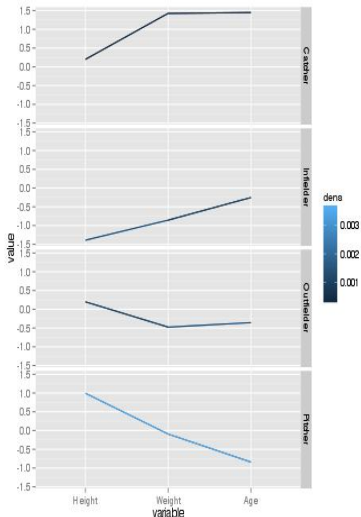
- “The monkeys stand for honesty, giraffes are insincere, elephants are kindly but they’re dumb”—Simon & Garfunkel song

Baseball Data, My Way



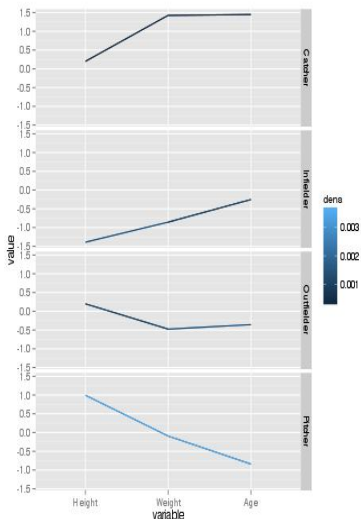
- “The monkeys stand for honesty, giraffes are insincere, elephants are kindly but they’re dumb”—Simon & Garfunkel song
- Pitchers are typically tall, thin, young.

Baseball Data, My Way



- “The monkeys stand for honesty, giraffes are insincere, elephants are kindly but they’re dumb”—Simon & Garfunkel song
- Pitchers are typically tall, thin, young.
- Catchers typically are much heavier, older.

Baseball Data, My Way



- “The monkeys stand for honesty, giraffes are insincere, elephants are kindly but they’re dumb”—Simon & Garfunkel song
- Pitchers are typically tall, thin, young.
- Catchers typically are much heavier, older.
- Infielders typically shorter, thinner, younger.

Example: UCI Wine Quality Data

Example: UCI Wine Quality Data

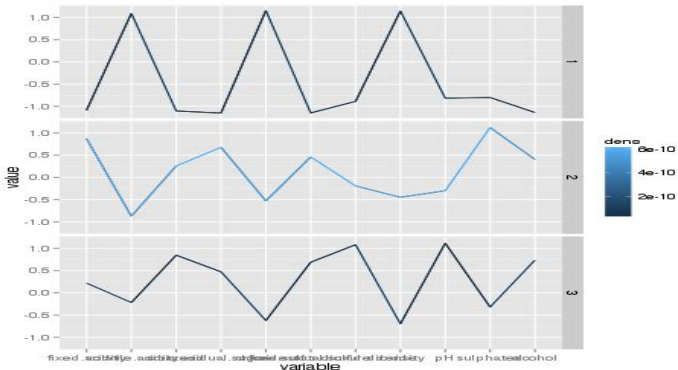
Variables are chemical measures, plus a quality variable.

Example: UCI Wine Quality Data

Variables are chemical measures, plus a quality variable.
I broke quality into 3 broad ranges.

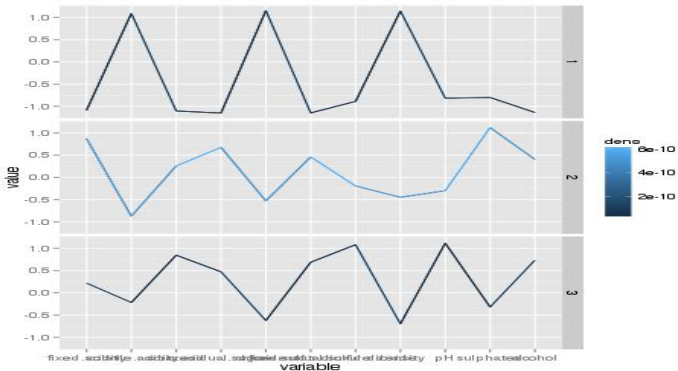
Example: UCI Wine Quality Data

Variables are chemical measures, plus a quality variable.
I broke quality into 3 broad ranges.



Example: UCI Wine Quality Data

Variables are chemical measures, plus a quality variable.
I broke quality into 3 broad ranges.



Need domain expert to interpret, but distinction between quality groups is clear.

How Many to Plot?

How Many to Plot?

We plot “a few of the most typical lines.”

How Many to Plot?

We plot “a few of the most typical lines.”

- My software asks the user to define “a few,” in an argument m .

How Many to Plot?

We plot “a few of the most typical lines.”

- My software asks the user to define “a few,” in an argument m .
- Above plots had $m = 1$.

How Many to Plot?

We plot “a few of the most typical lines.”

- My software asks the user to define “a few,” in an argument m .
- Above plots had $m = 1$.
- m smaller \Rightarrow higher “typicalness”

How Many to Plot?

We plot “a few of the most typical lines.”

- My software asks the user to define “a few,” in an argument m .
- Above plots had $m = 1$.
- m smaller \Rightarrow higher “typicalness”
- m larger \Rightarrow better chance to see ρ 's among the most typical data points

More Features

More Features

More features of the software (currently experimental):

More Features

More features of the software (currently experimental):

- Cluster hunting.

More Features

More features of the software (currently experimental):

- Cluster hunting.
Instead of finding global max of density, plot jagged line at each local maximum

More Features

More features of the software (currently experimental):

- Cluster hunting.
Instead of finding global max of density, plot jagged line at each local maximum
- Outlier hunting.

More Features

More features of the software (currently experimental):

- Cluster hunting.
Instead of finding global max of density, plot jagged line at each local maximum
- Outlier hunting.
Plot the least typical lines.

Computation

Computation

- R package available at
<http://heather.cs.ucdavis.edu/bdgraphs.html>

Computation

- R package available at
<http://heather.cs.ucdavis.edu/bdgraphs.html>
- Use k-NN density estimation.

Computation

- R package available at <http://heather.cs.ucdavis.edu/bdgraphs.html>
- Use k-NN density estimation.
- Use R's FNN (“fast nearest neighbor”) library for some speed.

Computation

- R package available at <http://heather.cs.ucdavis.edu/bdgraphs.html>
- Use k-NN density estimation.
- Use R's FNN (“fast nearest neighbor”) library for some speed.
- Use parallel computing for a lot more speed.